

Farben Metal surfaces

REISS



Weiß / White

RAL 9003



Lichtgrau / Light grey

RAL 7035



Staubgrau / Dust grey

RAL 7037



Silber / Silver

RAL 9006



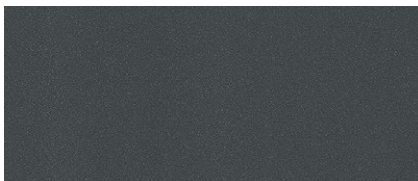
Graualuminium / Grey aluminium

RAL 9007

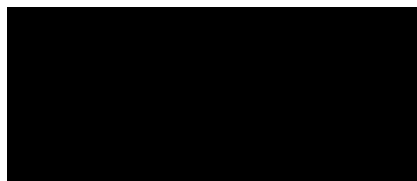


Anthrazit / Anthracite

RAL 7016



Anthrazitmetallic / Anthracite metallic REISS 63



Schwarz / Black

RAL 9011



Chrom / Chrome